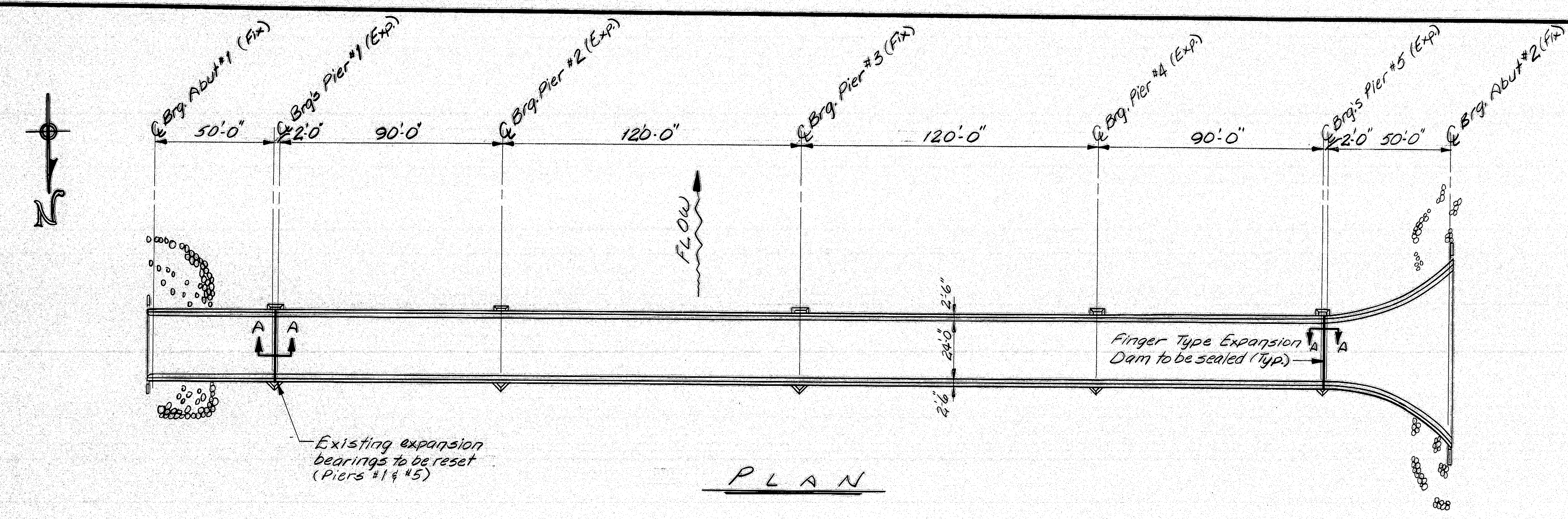
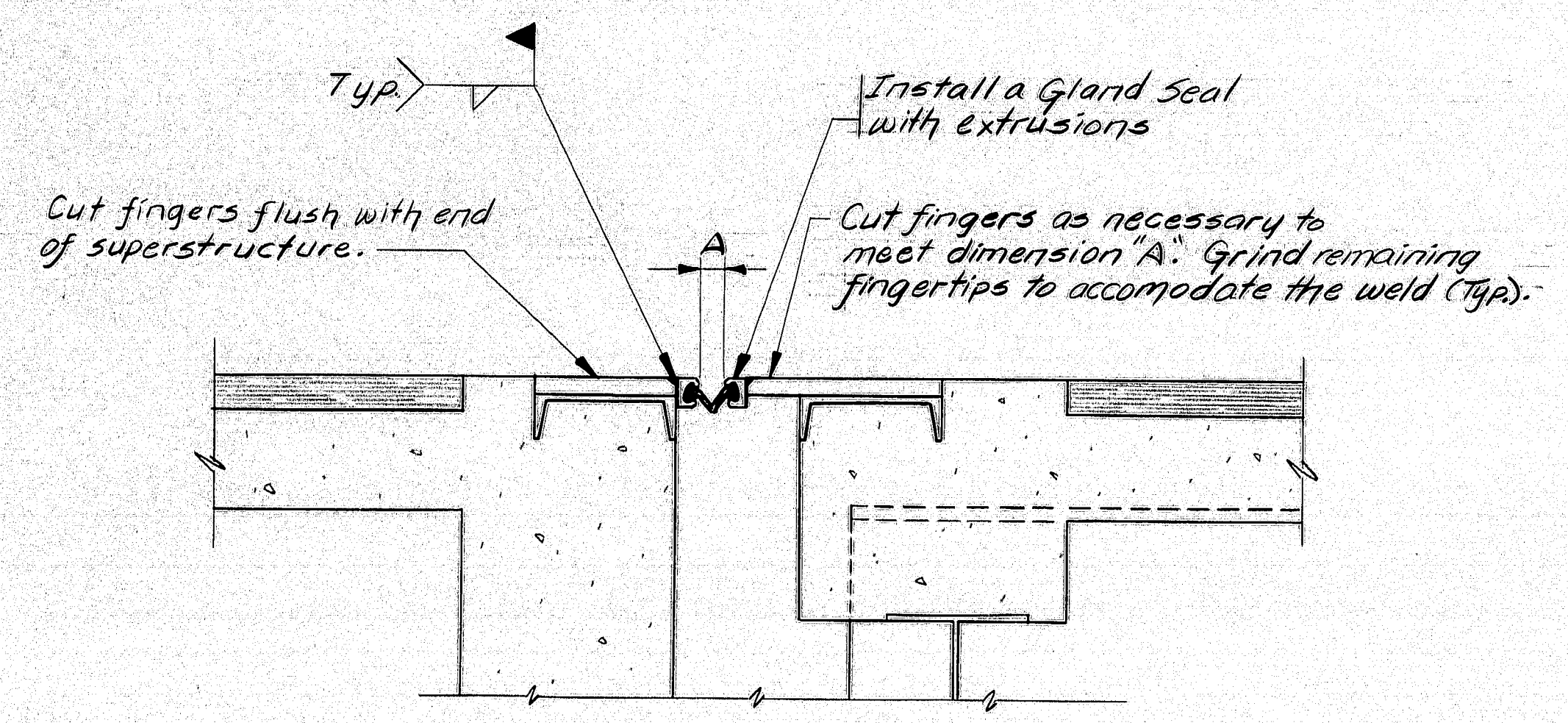


F.H.A. RES. NO.	STATE	PROJECT NUMBER	SHEET NO.	TOTAL SHEETS
1	MAINE	2267	1	2



PLAN



SECTION A-A

TEMPERATURE ADJUSTMENT CHART											
TEMP °F	70	10	20	30	40	50	60	70	80	90	100
DIM. "A"	Opening at Pier 1 & Pier 5	3 1/8"	2 3/8"	2 1/2"	2 1/8"	2"	1 3/4"	1 1/2"	1 1/8"	1 1/16"	3/8"

GENERAL NOTES

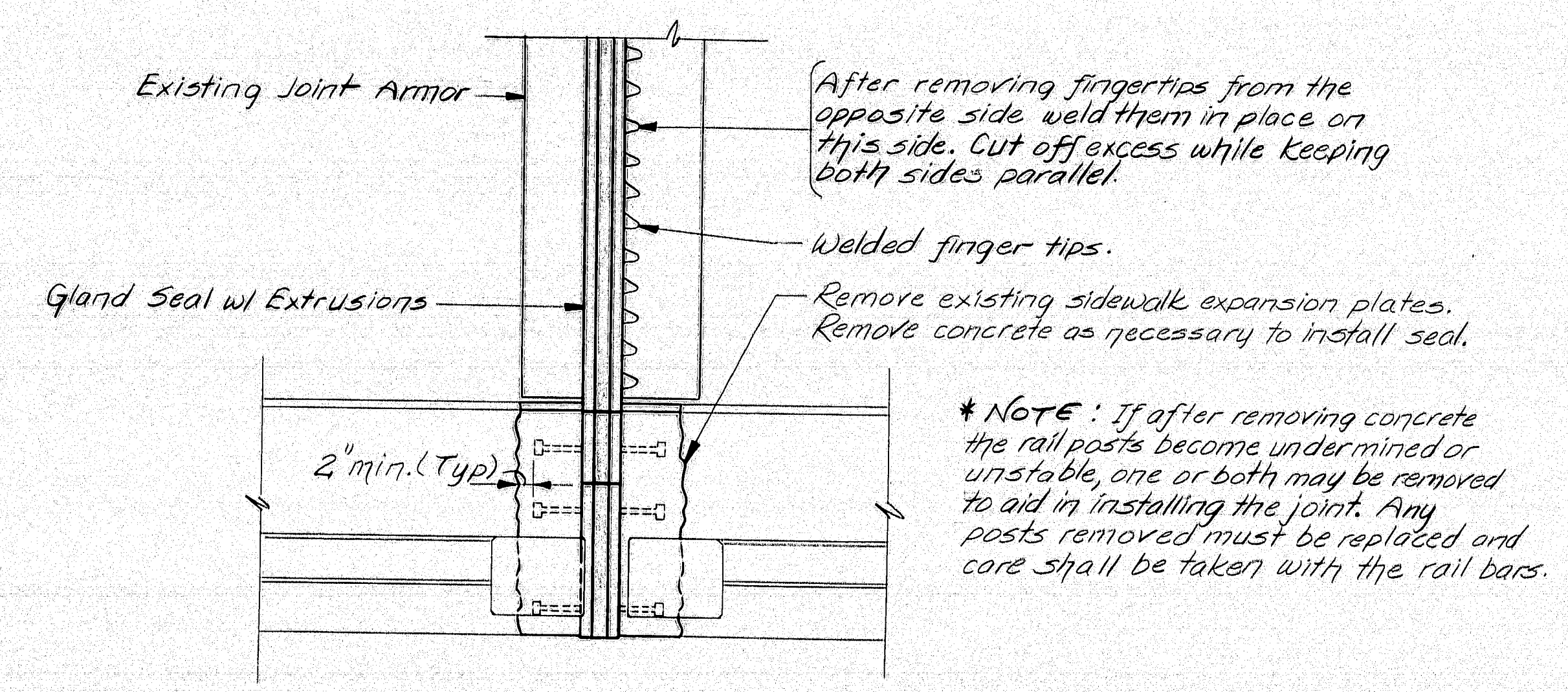
- Any exposed reinforcing steel shall be cleaned before any new concrete is placed. All reinforcing shall have a 2" minimum cover.
- Chamfer any exposed edges of concrete 3/4".

MATERIALS

- 2- Gland Seals with extrusions x 30'-0" long. (Watson Bowman & Acme SE-400 or D.S. Brown size 400).
- 16- 1 1/2" x Pintles
- 8- 1'-0" x 2 1/2" x 3'-0" Masonry Plates

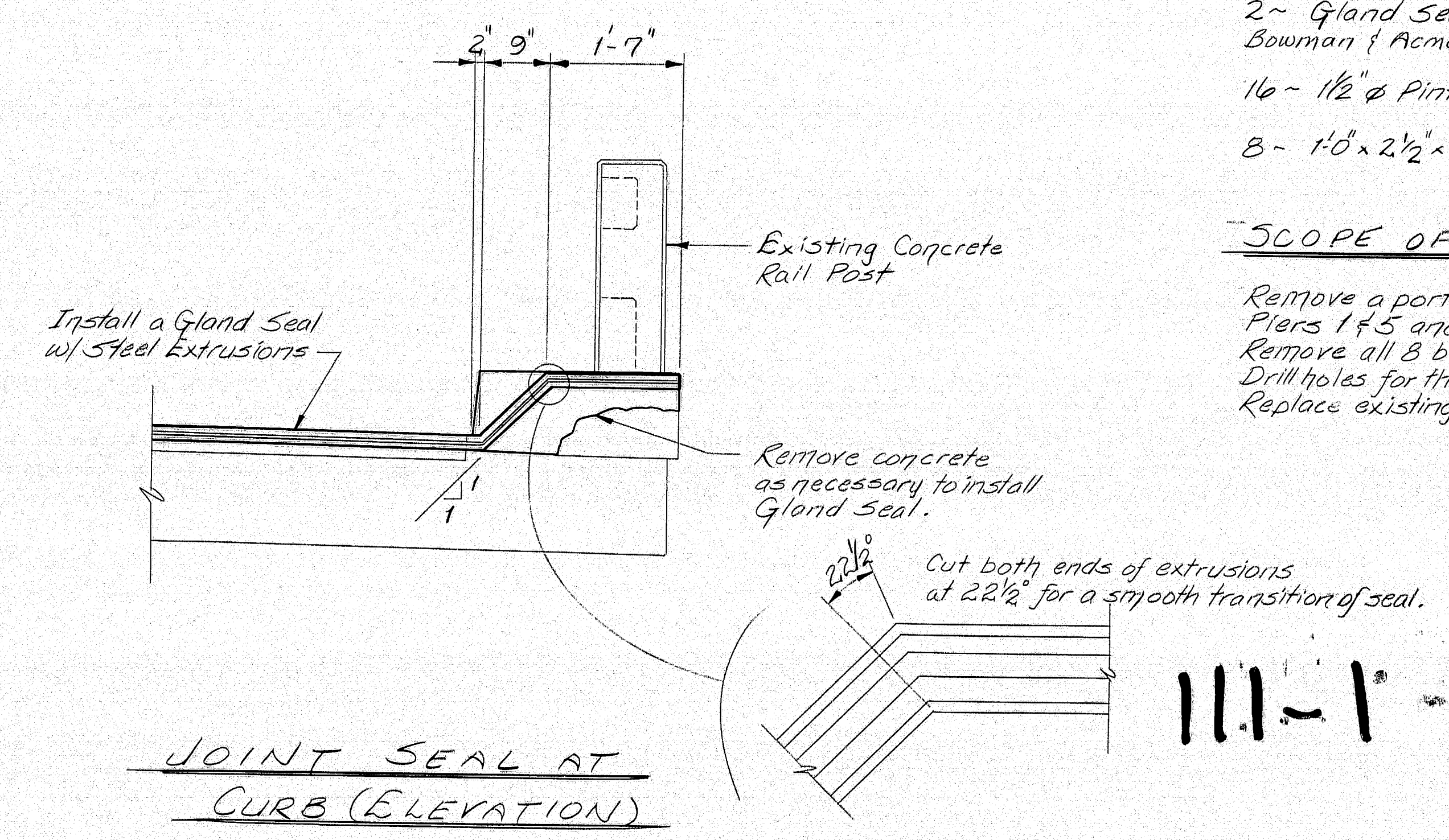
SCOPE OF WORK

Remove a portion of the existing expansion joint at Piers 1 & 5 and install a Gland Seal as shown. Remove all 8 bearings under the steel beams at Piers 1 & 5. Drill holes for the pintles and install new masonry plates. Replace existing bearings.



JOINT SEAL AT CURB

* NOTE: If after removing concrete the rail posts become undermined or unstable, one or both may be removed to aid in installing the joint. Any posts removed must be replaced and core shall be taken with the rail bars.



JOINT SEAL AT CURB (ELEVATION)

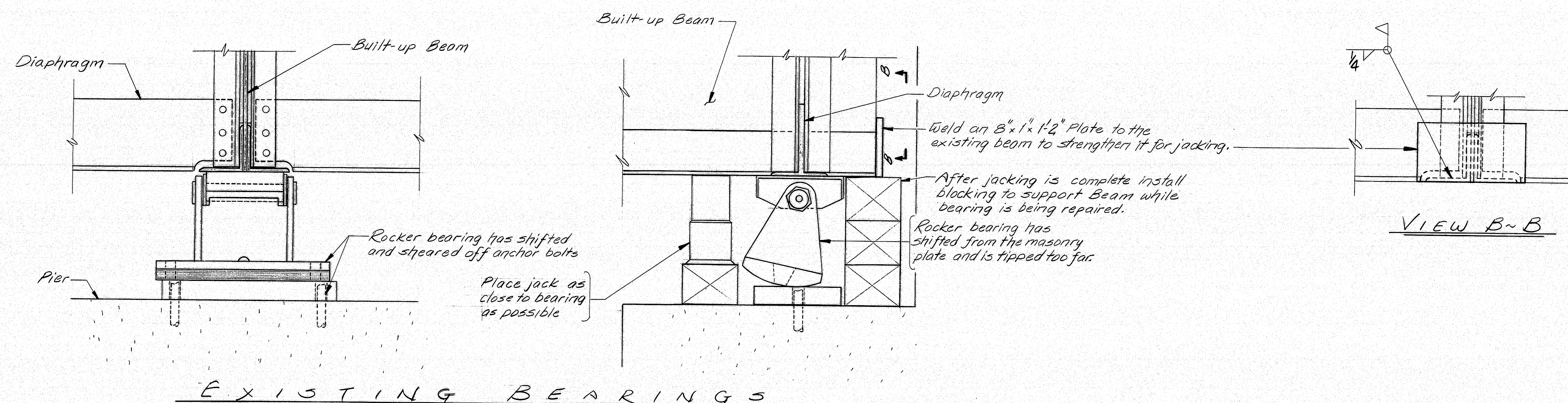
STATE OF MAINE
DEPARTMENT OF TRANSPORTATION

EMBDEN - SOLON BRIDGE
OVER
KENNEBEC RIVER
BETWEEN
EMBDEN & SOLON
SOMERSET COUNTY

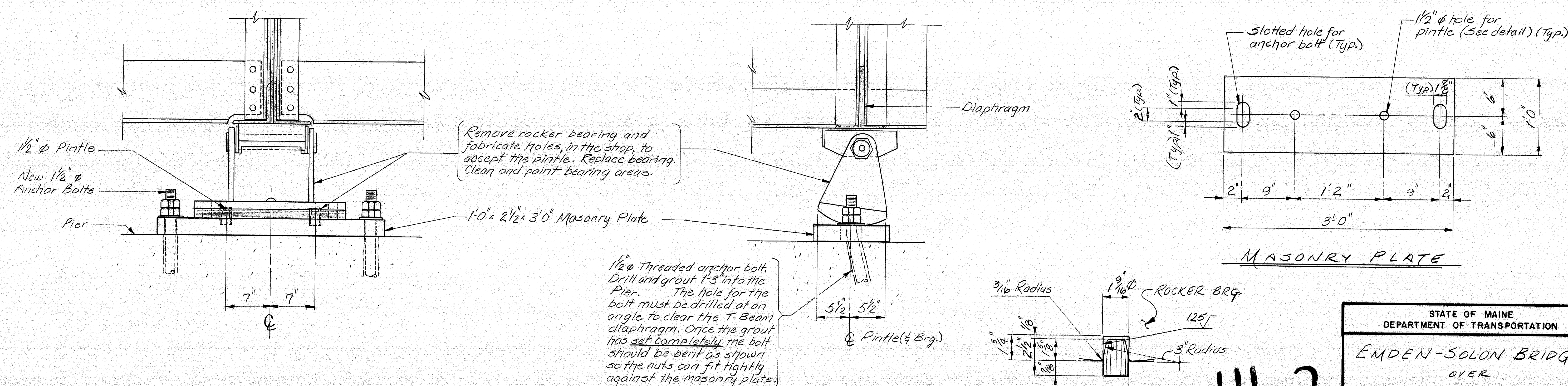
GENERAL PLANS
SHEET 1 OF 2 AUGUSTA, MAINE JUNE 1989

PROJECT DESIGN ENGINEER	DATE
DESIGN - DETAILED	12/8 6-89
CHECKED	
REVISIONS	
FIELD CHANGES	

F.H.W.A. REG. NO.	STATE	PROJECT NUMBER	SHEET NO.	TOTAL SHEETS
1	MAINE	22 67	2	2



EXISTING BEARINGS



PROPOSED BEARINGS

PINTLE DETAIL

STATE OF MAINE
DEPARTMENT OF TRANSPORTATION
EMDEN-SOLON BRIDGE
OVER
KENNEBEC RIVER
BETWEEN
EMDEN & SOLON
SOMERSET COUNTY
BEARING DETAILS
SHEET 2 OF 2 AUGUSTA, MAINE

111-2

PROJECT DESIGN ENGINEER	BY	DATE
DESIGN - DETAILED		
CHECKED		
REVISIONS		
FIELD CHANGES		
PLANS		

BRUNING 45710-1